

WORLD CLASS END OF LIFE PROGRAM TAMWORTH PALLIATIVE CARE UNIT

Architectural Design Statement



1. DESIGN STATEMENT

The World Class End of Life Program (WCEoLP) is committed to delivering a premium palliative care services across NSW. It will deliver purpose built facilities that support models of care, provide an improved home-like environment for patients, family and staff.

The Tamworth WCEoLP will deliver an additional 6 palliative care beds as an extension of the existing Nioka unit on the ground floor of the Acute Services Building, thereby providing a total of 12 beds at completion.

The local context of Tamworth along with the existing hospital campus provides a variety of references that generate an architectural narrative. The natural environment ranges from rolling green mountains to lush farm land. Tamworth has a diverse history of first nations heritage which is evident throughout the Hospital campus with the planting and gathering spaces.

The Design has been developed in accordance with the following guidelines:

Greener Places Design Guide

Extensive landscaping has been incorporated into the design as an extension of the patient spaces within the unit. Each bedroom opens onto a private terrace and various sized common areas assist in easing stress for patients and their carers with access to nature. The impacted area around the new building is also improved with sensitive amendments to the landscape to enhance the staff and public experience. New canopy trees into the new external spaces contribute to the comfort of its users and create a healthy environment

Better Placed Design Guide

The form of the new Palliative Care Unit is a sensitive response to its local context. A one storey structure linked to the acute services building, pitched roofs and a soft timber look cladding bring a domestic feel to the environment. The timber look vertical cladding responds both to the existing hospital cladding and to the rural environment surrounding the hospital site.

The unit provides equitable and inclusive access to all visitors and staff. A new entry provides direct, accessible arrival from the carpark and the new unit seamlessly links into the existing hospital with no physical disruption. A variety of common spaces are provided for different activities and clients' needs. The interiors have been especially designed to create a calm, homelike environment with custom joinery and finishes. While concentrating on an optimum patient and carer experience, all areas comply with current health guidelines to ensure they are fit for their clinical purpose. Staff are also provided with a private courtyard to complement their break room.



Artist Impression: [Link](#)

Connecting with Country

Indigenous groups were consulted throughout the design to ensure a design with Country dialogue translated into the end result. Connection to external spaces was a priority and free access between bedrooms and communal spaces to the natural environment creates a safe, comfortable place. Elders and stakeholders advised on preferred plant species to align with local cultural protocol. A dedicated area for a yarning circle is located in the courtyard landscape. The existing indigenous garden on site which is impacted by the development is proposed to be relocated in the hospital campus. This design will be developed in close consultation with indigenous user groups and Elders.

CPTED Principles

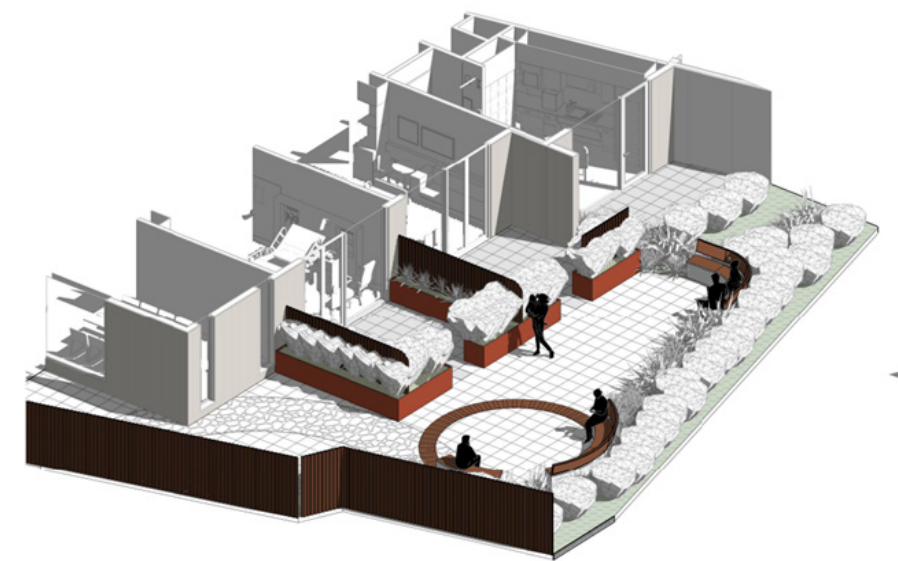
The new addition to the Palliative Care Nioka Unit seamlessly extends the secure perimeter of the existing unit and separates the staff only access corridors from visitor access areas with access security cards. The new external public entry is highly visible from the public access path with a direct view into the reception area. A new main staff station is located opposite the new entry to monitor arrivals and assist with intuitive wayfinding. Intercom access and after hours lockdown contribute to the security of the unit. The new central staff station and clinical workroom also assists to oversight the visitor corridors and access from 2 sides ensures staff safety. Visual access to the courtyard areas are enhanced with large glazed windows. There are no hidden corners or recesses in the landscape design, or in the visitor access areas internally. The potential risks of a retaining wall adjacent to the unit is mitigated with a more open gabion arrangement and secure balustrade separation at the public footpath on the higher level.

The overall design of the Palliative Care expansion was workshoped with the community and various stakeholder groups according to the Design Principles that were developed during Masterplanning phase. A domestic feel and scale has been adopted to create a homelike warm environment. Direct access to natural ventilation, outdoor courtyards and landscaped gathering spaces have been provided from each Patient bedroom and career space enhancing the home like environment for patients and their families. The stakeholder groups emphasized the importance of both indoor and outdoor communal spaces for multiple groups to gather for ceremonies and reflection. A private courtyard space has been provided to staff for respite.

North of the hospital campus site is environment protected land, which creates a quite calm surrounding as well as providing extensive views across the mountains. The immediate area of the proposed expansion is quite steep, there is a 3 metre level difference from the footpath and road above.

The proposed building form is sympathetic to its context. The expansion has a single storey frontage. A new entrance into the Palliative Care unit has been provided adjacent to the public carpark creating a private calm entry for families. The use of Aluminum timber look cladding with an expressed profile relates back to the spiritual care building. The clearstory window breaks up the bulk of the building allowing for a gentle form that blends within the landscape and back into the existing Acute Services Building.

During each phase of design, HI Design Assurance Reviews (Option B) were held. During Design Development one Design Assurance Review was held in March. The outcome of this review saw minor internal review of the staff safety egress points and Bedroom clearances. It was noted that the Landscape is to not be reduced.

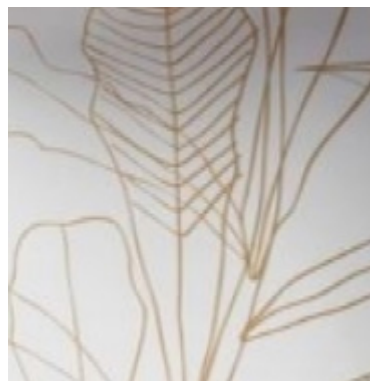


Artist Impression: Patient Courtyard

2. DESIGN GUIDE FOR HEALTH DESIGN PRINCIPLES

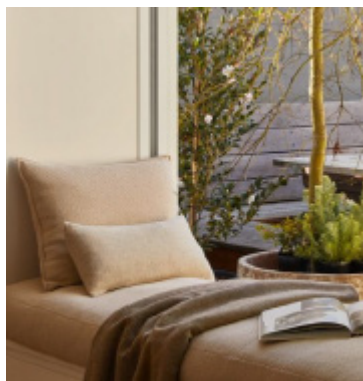
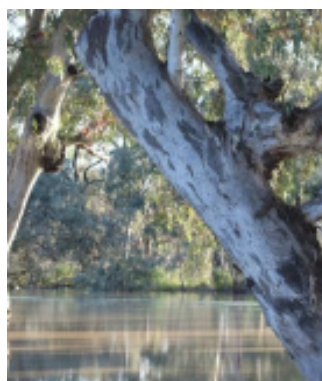
DESIGN FOR DIGNITY

Each Patient Bedroom has large double glazed doors and glazed windows for patient outlook and to maximise natural daylight within the room. Each Patient Bedroom in the WcEOL expansion has direct access to a private courtyard. The patient courtyard space allows for a patient bed as well as seating for careers and visitors. This principle creates for a homelike feel.



DESIGN FOR WELLBEING

In addition to the Patient Bedrooms having direct access to a private courtyard, the Patient Lounge space also has direct access to a private courtyard providing a calm, light filled warm space, Seating nooks have been designed throughout the main courtyard space used by the existing 6 beds and the Patient Dining space. This allows for quiet conversations and reflection for families and careers.



DESIGN FOR EFFICIENT & FLEXIBLE DELIVERY OF CARE

During the user group consultations it was discussed that multi-functional spaces are required for family conversations, areas to listen to music and read for families as well as quiet spaces to reflect. The separate Dining and lounge provide for this while also catering for all ages allowing children to play while adults can have conversations. The loose furniture create for a flexible space where people can come together.



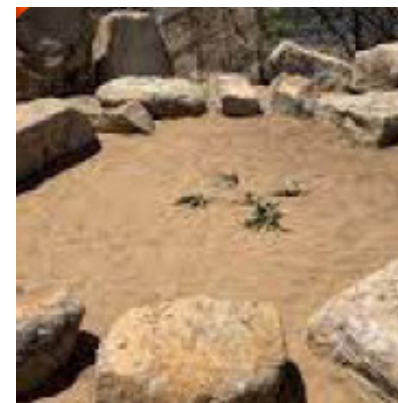
DESIGN FOR LONGEVITY & RESILIENCE

Soft hues and tones of natural textures are used throughout. Timberlook vinyls and carpets create for a domestic feel. Recycled materials that are hard wearing are used where possible.



DESIGN WITH COUNTRY

The outdoor courtyard includes a yarning circle which allows for cultural rituals, ceremonies and story telling. Indigenous groups played a involved part of the planting selection to ensure the plants are appropriate for the space.



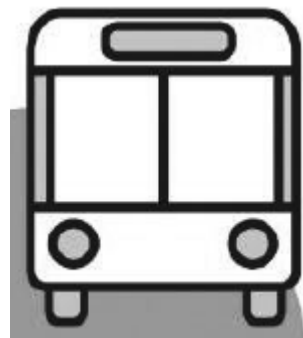
DESIGN FOR THE NEIGHBOURHOOD & SURROUNDING ENVIRONMENT

Each Patient Bedroom orientation has been carefully considered to maximise views and connection to the landscape and the sky. Shading has also been assessed to ensure each patient courtyard is a comfortable useable space.



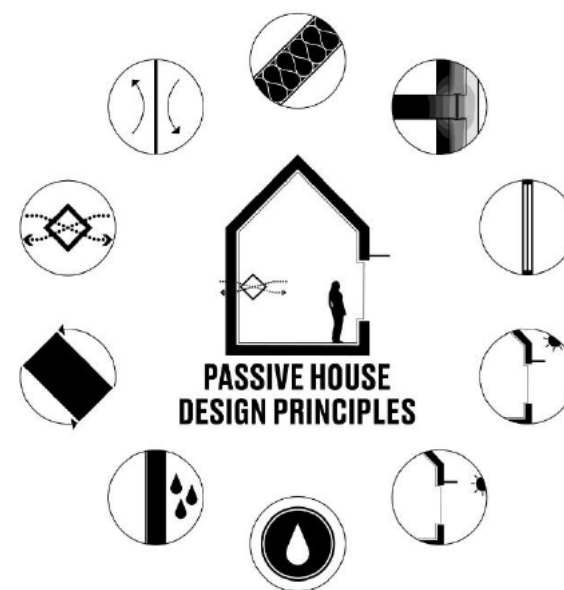
DESIGN FOR CONNECTION

A new public entry adjacent to the carpark has been designed for ease of access to families, carers and visitors. This also creates a domestic feel appose to walking through the main hospital. The Palliative care unit is also directly connected to the main hospital as well as a new link to Mortuary provide in the new design for privacy



DESIGN FOR SUSTAINABILITY

The Floorplate maximises natural daylight with the clerestory window and large glazing throughout the expansion from each patient bedroom. This provides connection to the outside into the green courtyard spaces. Double glazed doors from each patient bedroom into a private courtyard space allows for natural ventilation throughout the facility. Solar shading has been carefully considered minimising solar gains to the east and west.



3. SITE CONTEXT

SITE LOCATION

Tamworth hospital site sits 2.6km northwest of Tamworth CBD. The site is bounded by Johnston Street to the south, Smith Street to the east and Dean Street to the west. The hospital campus has expansive views north and views towards the mountains to the east.

SITE SUMMARY

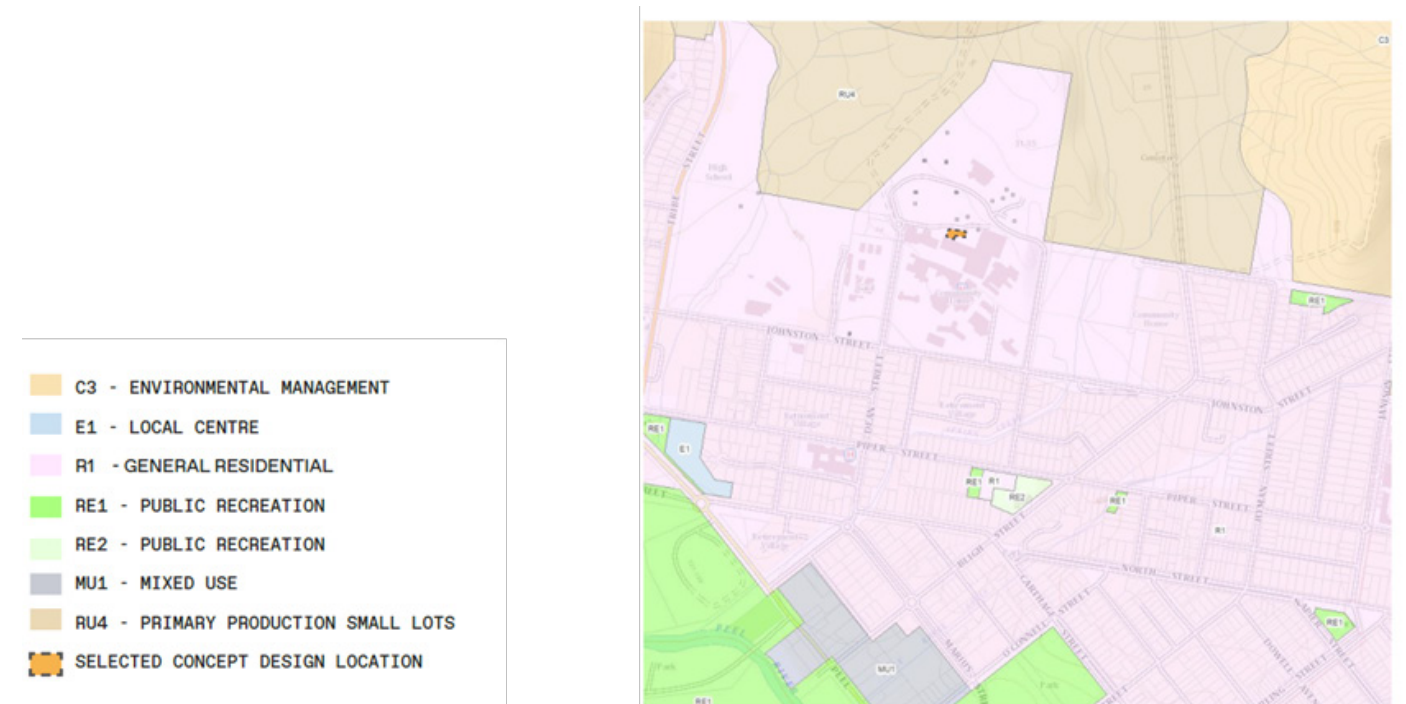
Main public access to Tamworth Hospital is from the west, off Dean Street, with looped drop-off to the ground floor main entry of the Acute Services Building completed in 2015.

Ambulance vehicles access from the east via Smith Street, with ambulance bays located to the north of the emergency department which given the topography of the site, is at level 01 a level above the main entry.

Logistics access is from the east serving the hospital loading dock at ground level. The hospital can be access by bus with drop of adjacent the ASB. Alternative access to Tamworth hospital is by car or taxi, with on grade parking provided throughout the site.

The proposed building site will be adjacent to the existing palliative care unit (Nioka). The Palliative Care Unit (Nioka) is currently embedded in Medical Ward 1 on the ground floor of the Acute Services Building at Tamworth Hospital campus. The building form is a sculptural element abutting the existing ASB. The pitched roof form is offset with clerestory windows to allow light into the corridors of the unit for an abundance of light and uplifting spaces

There is a significant level change between the road and footpath north of the unit which requires a steep batter and gabion retaining wall dependent upon the level change, given the topography of the site. The batter will form a landscaped rockery. Given the footprint of the new unit and courtyard gardens, a significant portion of the existing cultural garden is impacted. This will be relocated elsewhere on the hospital campus. As part of this project, the site cut and linkway proposal will abut the existing garden and will be made good.



Zoning Diagram



Site Access Plan

SITE ANALYSIS

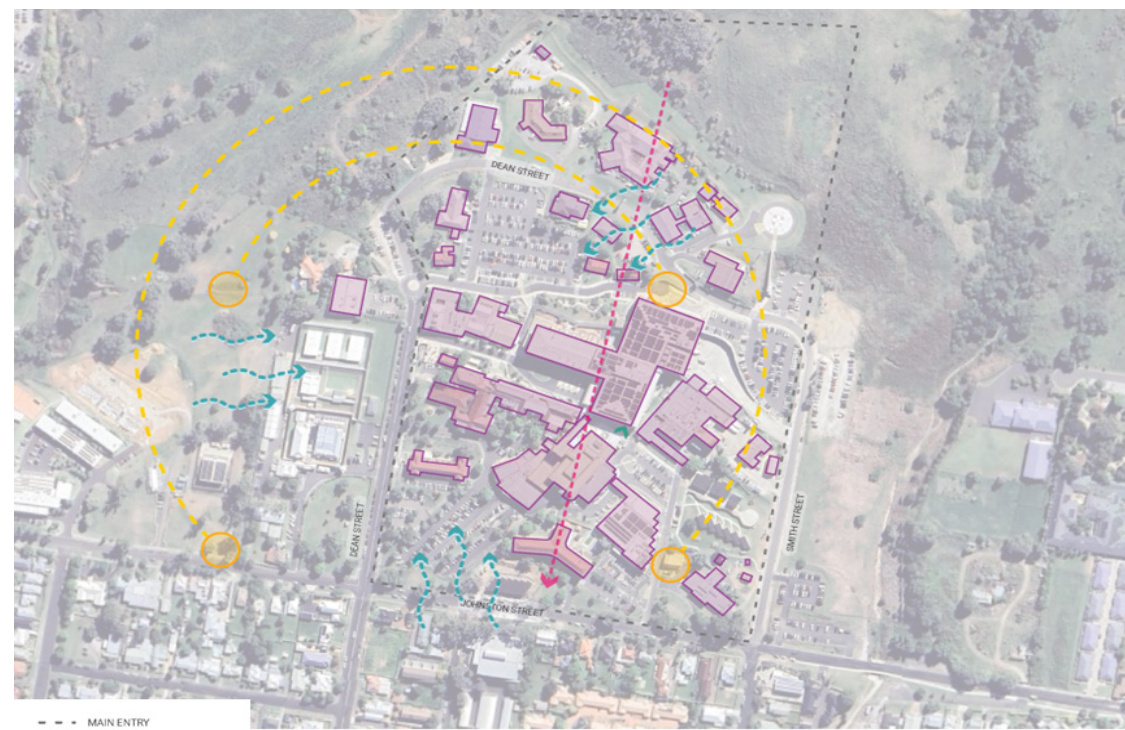
In Tamworth, the summers are hot, the winters are cold, and it is mostly clear year-round. Over the course of the year, the temperature typically varies from 2°C to 32°C and is rarely below -1°C or above 37°C.

The low-rise buildings to the north provide good opportunity for solar access on the north of the site.

Tamworth hospital campus receives north easterly and southerly winds in summer and westerlies in the winter

The perimeter of the site is mapped as bush fire prone land, however the area of the existing cluster of buildings and the Acute Services Building is not mapped as such. The below diagram indicates the Vegetation buffer in yellow and Vegetation Category 1 in red.

The Tamworth Hospital Campus unaffected by, or not mapped as being subject to, Flood Planning Area. 1:100 year scenario and PMF doesn't impact the hospital campus.



Site Analysis Plan

SITE ACCESS

Main public access to Tamworth Hospital is from the west, off Dean Street, with looped drop-off to the ground floor main entry of the Acute Services Building completed in 2015.

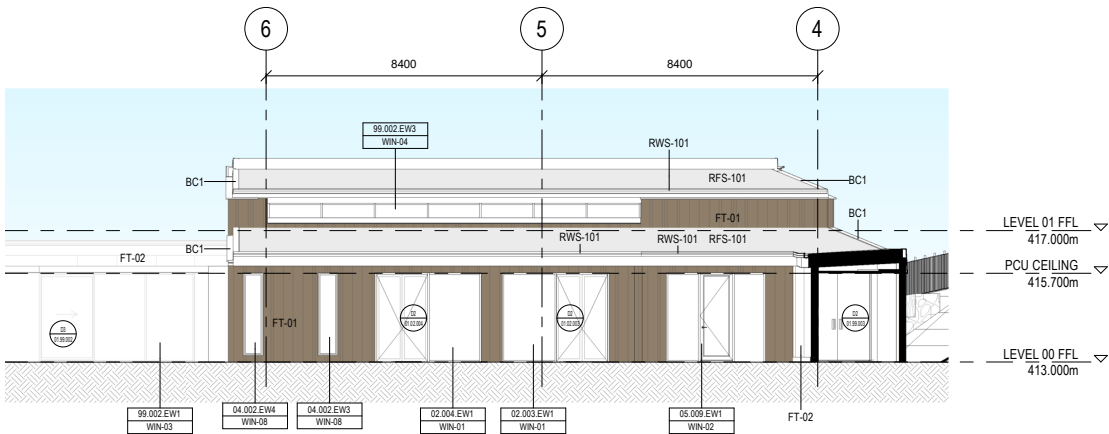
Ambulance vehicles access from the east via Smith Street, with ambulance bays located to the north of the emergency department which given the topography of the site is at level 01, a level above the main entry. Logistics access is from the east serving the hospital loading dock at ground level. The hospital can be accessed by bus with drop off adjacent the ASB. Alternative access to Tamworth hospital is by car or taxi, with on grade parking dispersed across the site.



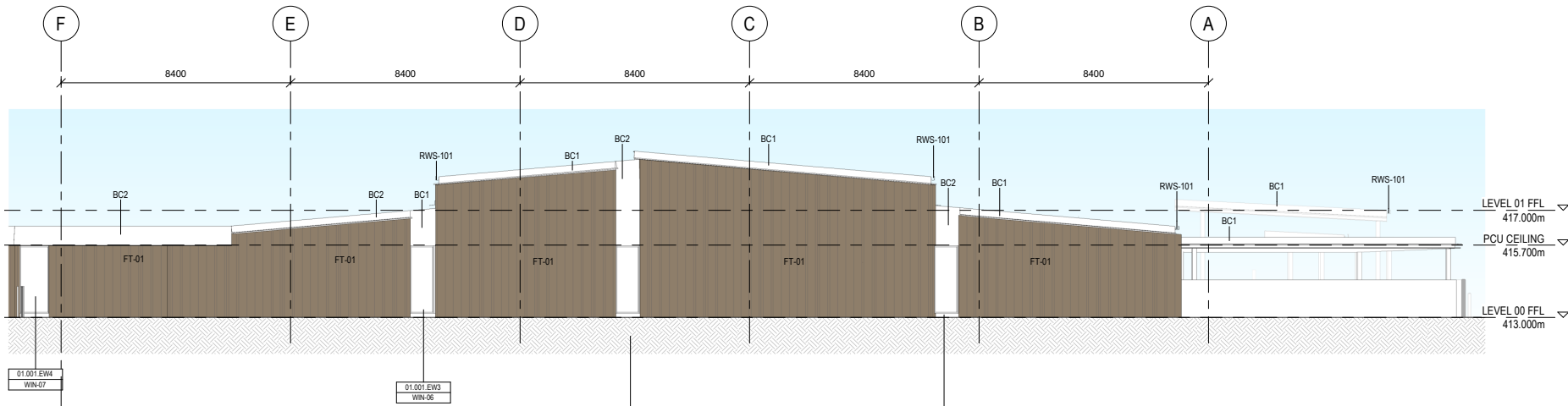
Site Access Plan

4. ARCHITECTURAL DESIGN

The Tamworth Palliative Care unit Expansion is a single storey structure that connects into the Nioka Palliative Care unit on the ground floor of the Acute Services Building. A new, dedicated external entry through a landscaped courtyard is provided to the unit with easy access from the carpark. The building design is inward looking, focussing on the bedroom courtyards and intimate shared landscaped areas to provide privacy to the patients and their carers. Large windows and double doors look out from each bedroom to landscaping and a clerestory window in the main corridor brings natural light and a sense of space with high ceilings. The volume of the unit is wrapped to the north and east with a bed corridor providing discreet, direct access to other units and the mortuary. The cladding references the existing facade with a muted timber look plank with random spacings. The building sits low in the landscape which banks up to the north to the Emergency drop off road. Gabion walls soften the level change to the north and a re-modelled staff courtyard is located to the east.



East Elevation



North Elevation

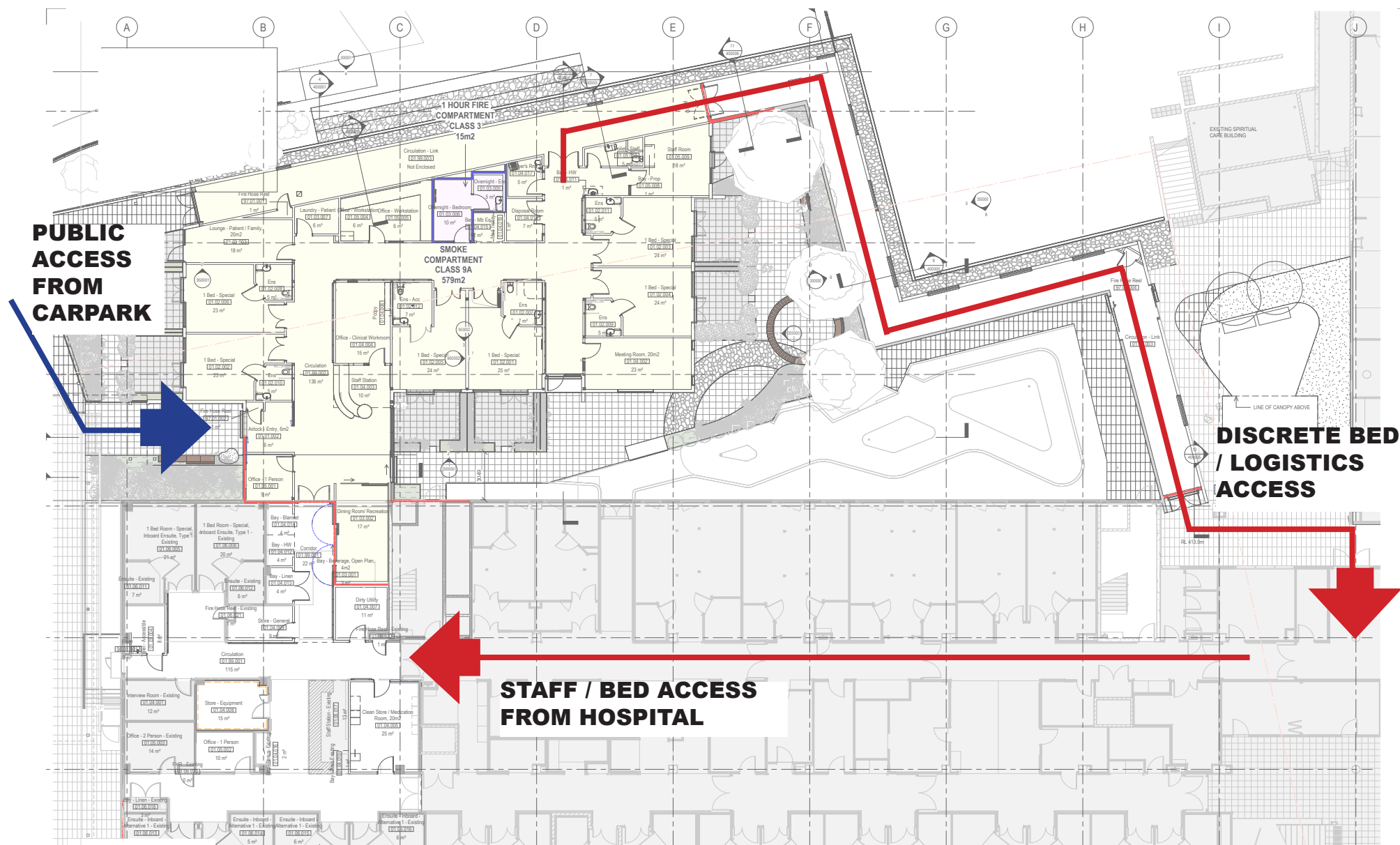


4. ARCHITECTURAL DESIGN

CIRULATION

The current primary pedestrian access into Tamworth Palliative Care unit is on the Ground Floor of the ASB through the Medical Inpatient Unit. The proposed pedestrian access has been relocated to a separate private entrance into Palliative care located adjacent to the public car park on the western side of the building. Discrete ambulance access for body movement will be provided via the new link.

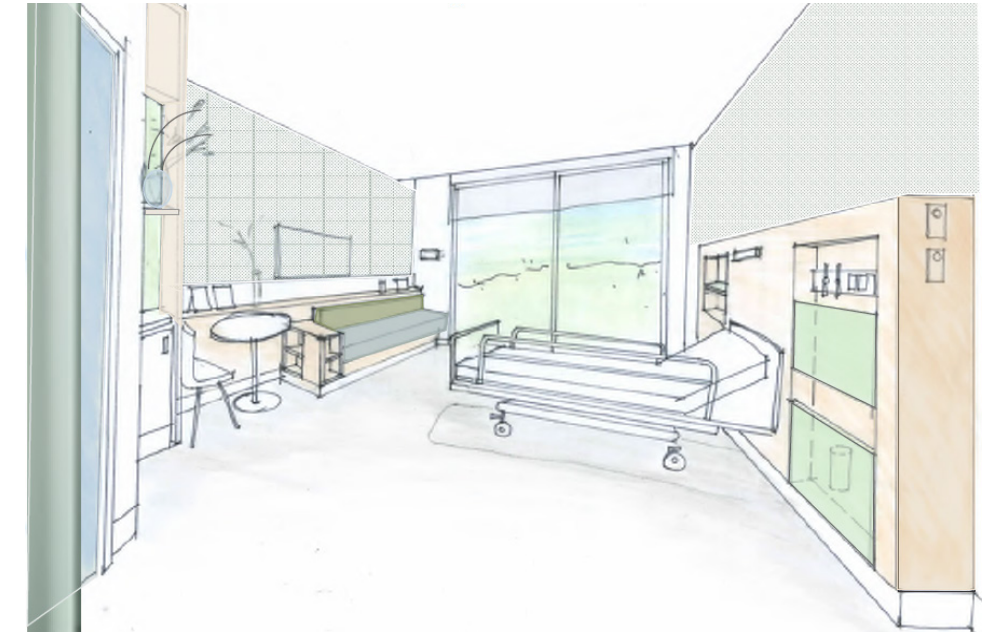
The Palliative Care unit will have 24/7 access enabling carers access day and night. There are two entry doors into the Palliative care unit which both require swipe access / Intercom access. The bedrooms doors to the external courtyard will have a snib lock for security.



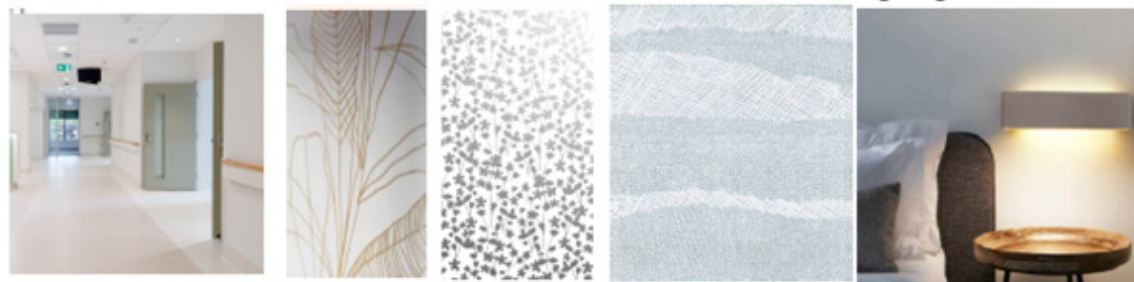
4. ARCHITECTURAL DESIGN

INTERIOR DESIGN

The Interior Design principles have been carried through from Schematic Design. A strong connection to nature with large glazed opens provide natural warmth throughout the Tamworth Palliative Care Unit expansion. Soft hues and tones of natural textures are used throughout. Timber look floor vinyl will be used to create a soft domestic feel. Carpet will also be spotted where possible through the department to bring in softness. Lighting will play a large role in the overall feel of the patient room, soft wall lights as well as indirect ambient lighting has been selected.

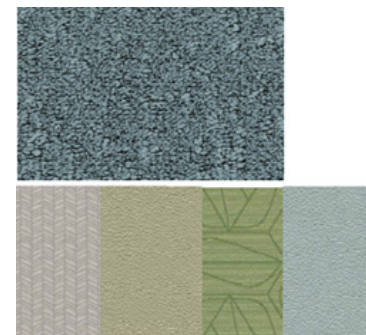


Artist Impression: Patient Bedroom



staff station

edge illuminated ceiling



Artist Impression: Patient Dining

6. ARCHITECTURAL REF DRAWINGS

WORLD CLASS END OF LIFE PROGRAM TAMWORTH HOSPITAL

LIST OF DRAWINGS		
DRAWING NO.	DRAWING TITLE	REVISION
EOL-ACG-TAM-DWG- AR -000000	COVER SHEET & DRAWING LIST	A
EOL-ACG-TAM-DWG- AR -020000	PRECINCT SITE PLAN	A
EOL-ACG-TAM-DWG- AR -020001	SITE PLAN	A
EOL-ACG-TAM-DWG- AR -100000	DEMOLITION PLAN - GROUND FLOOR	A
EOL-ACG-TAM-DWG- AR -200001	GENERAL ARRANGEMENT - GROUND FLOOR	B
EOL-ACG-TAM-DWG- AR -200002	ROOF PLAN	A
EOL-ACG-TAM-DWG- AR -260001	FINISHES PLAN - GROUND FLOOR	A
EOL-ACG-TAM-DWG- AR -280001	FFE PLAN - GROUND FLOOR - ZONE 1	A
EOL-ACG-TAM-DWG- AR -280002	FFE PLAN - GROUND FLOOR - ZONE 2	A
EOL-ACG-TAM-DWG- AR -300000	FACADE ELEVATIONS-SHEET 1	B
EOL-ACG-TAM-DWG- AR -300001	FACADE ELEVATIONS-SHEET 2	A
EOL-ACG-TAM-DWG- AR -400000	FACADE SECTIONS-SHEET 1	A
EOL-ACG-TAM-DWG- AR -400001	FACADE SECTIONS-SHEET 2	A
EOL-ACG-TAM-DWG- AR -400002	WALL SECTIONS (DETAILS)-SHEET 1	A
EOL-ACG-TAM-DWG- AR -400003	WALL SECTIONS (DETAILS)-SHEET 2	A
EOL-ACG-TAM-DWG- AR -400004	WALL SECTIONS (DETAILS)-SHEET 3	A
EOL-ACG-TAM-DWG- AR -400005	WALL SECTIONS (DETAILS)-SHEET 4	A
EOL-ACG-TAM-DWG- AR -400006	WALL SECTIONS (DETAILS)-SHEET 5	A
EOL-ACG-TAM-DWG- AR -900000	WALL TYPES	A
EOL-ACG-TAM-DWG- AR -910000	WINDOW TYPES & SCHEDULE	A
EOL-ACG-TAM-DWG- AR -940001	STANDARD JOINERY - GENERAL NOTES AND DETAILS	B
EOL-ACG-TAM-DWG- AR -940002	STANDARD JOINERY - TYPICAL CONSTRUCTION	B
EOL-ACG-TAM-DWG- AR -940003	STANDARD JOINERY - OVERBENCH JOINERY AND CUPBOARDS	B
EOL-ACG-TAM-DWG- AR -940004	STANDARD JOINERY - BENCH & UNDERBENCH JOINERY	B
EOL-ACG-TAM-DWG- AR -940005	STANDARD JOINERY - STAINLESS STEEL & BENCH DETAILS	B
EOL-ACG-TAM-DWG- AR -940006	STANDARD JOINERY -FULL HEIGHT UNITS	B
EOL-ACG-TAM-DWG- AR -940007	STANDARD JOINERY -FULL HEIGHT UNITS	B
EOL-ACG-TAM-DWG- AR -950001	SPECIAL JOINERY - PULL OUT DAYBED (TYPICAL)	B
EOL-ACG-TAM-DWG- AR -950002	SPECIAL JOINERY - BEDHEAD PANEL	B
EOL-ACG-TAM-DWG- AR -950003	SPECIAL JOINERY - STAFF STATION	B
EOL-ACG-TAM-DWG- AR -950004	SPECIAL JOINERY - DINING ROOM JOINERY	B





A

B

C

D

E

F

G

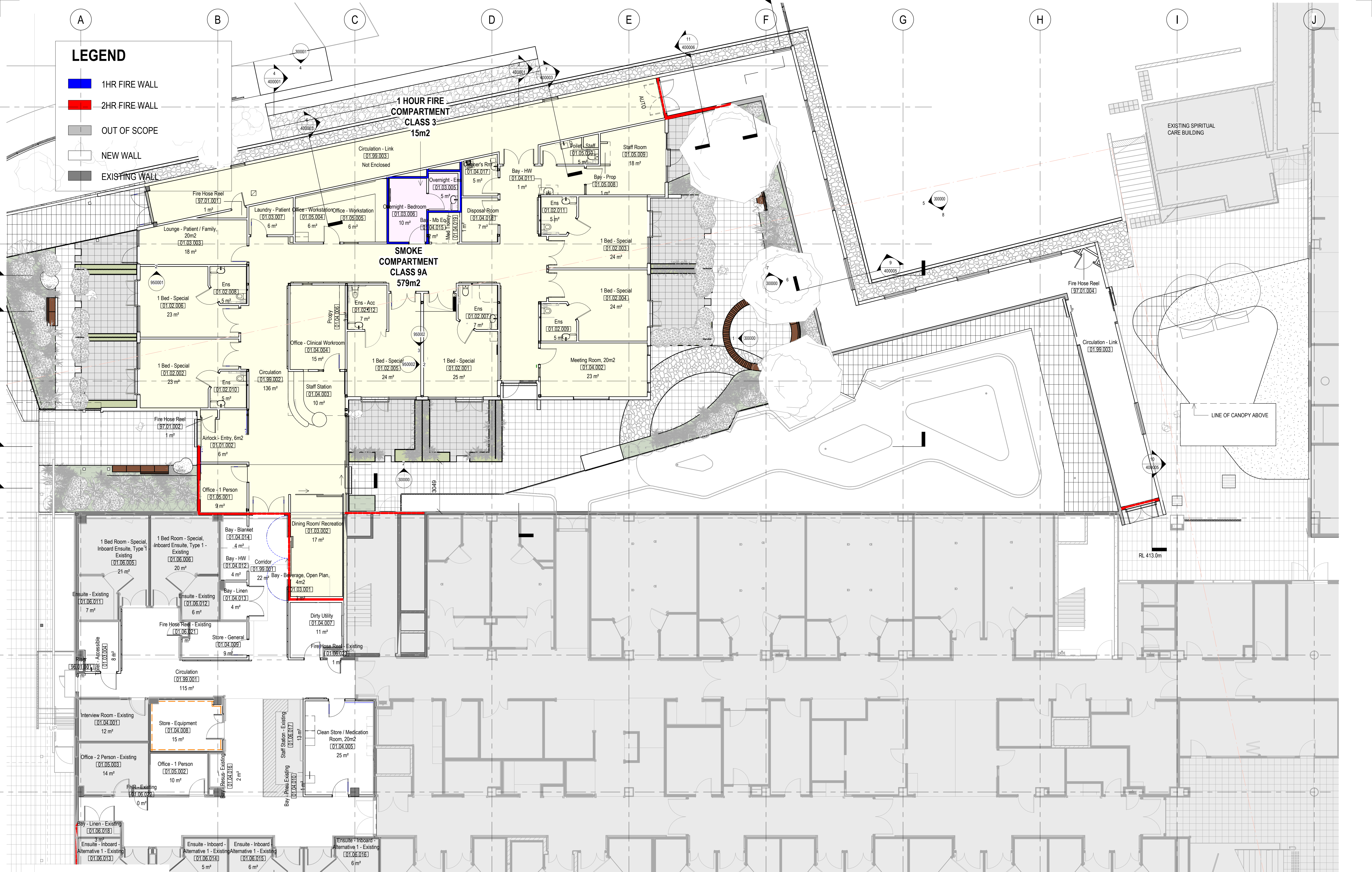
H

I

J

LEGEND

- 1HR FIRE WALL
- 2HR FIRE WALL
- OUT OF SCOPE
- NEW WALL
- EXISTING WALL



architectus™
Conrad
Gargett

MANAGING CONTRACTOR



Client
HEALTH INFRASTRUCTURE
NSW GOVERNMENT Health Infrastructure

Project
WORLD CLASS END OF
LIFE PROGRAM -
TAMWORTH PALLIATIVE
CARE

Revision
ISSUE REVISION DESCRIPTION
A ISSUED FOR INFORMATION
B ISSUED FOR DRAFT DD

DATE
14/02/25
07/03/25

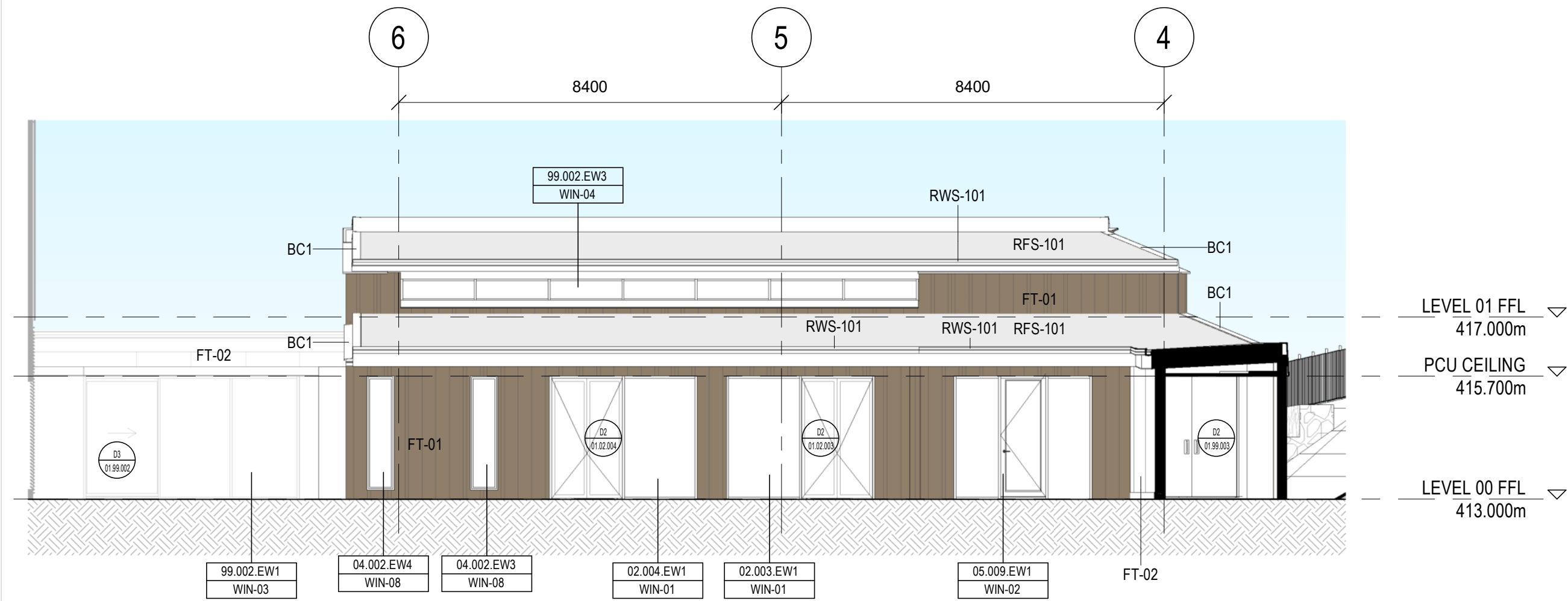
INT. JZ
JZ
Copyright Architectus Conrad Gargett. ACN 90 131 245 684
ABN 90 131 245 684
Do not scale this drawing and verify all dimensions and levels on site.
Nominated Architect : Lawrence Toalro NSW Reg. 10255.

Drawing
GENERAL
ARRANGEMENT -
GROUND FLOOR

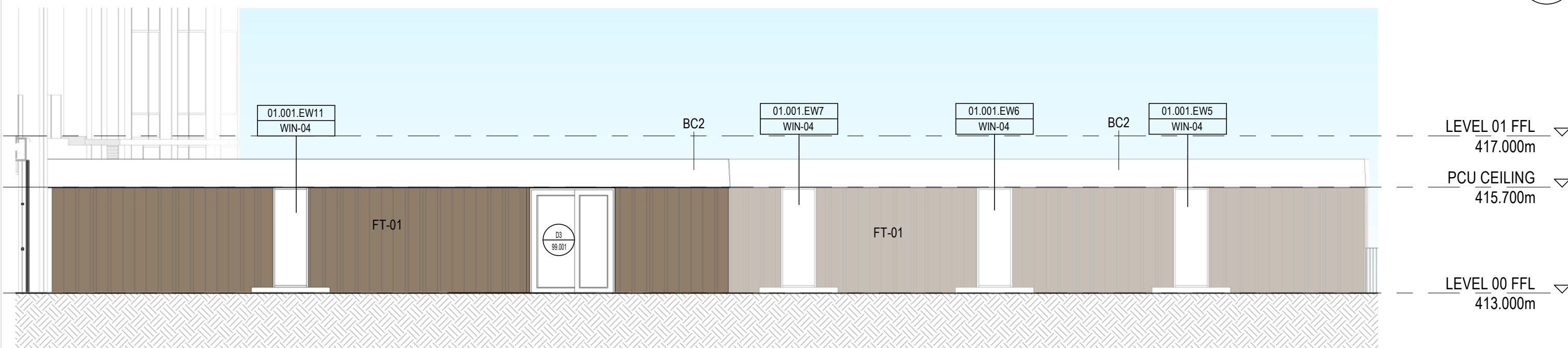
A1 Scale 1 : 100
Project 2210003
Drawing EOL-ACG-TAM-DWG-AR - 200001



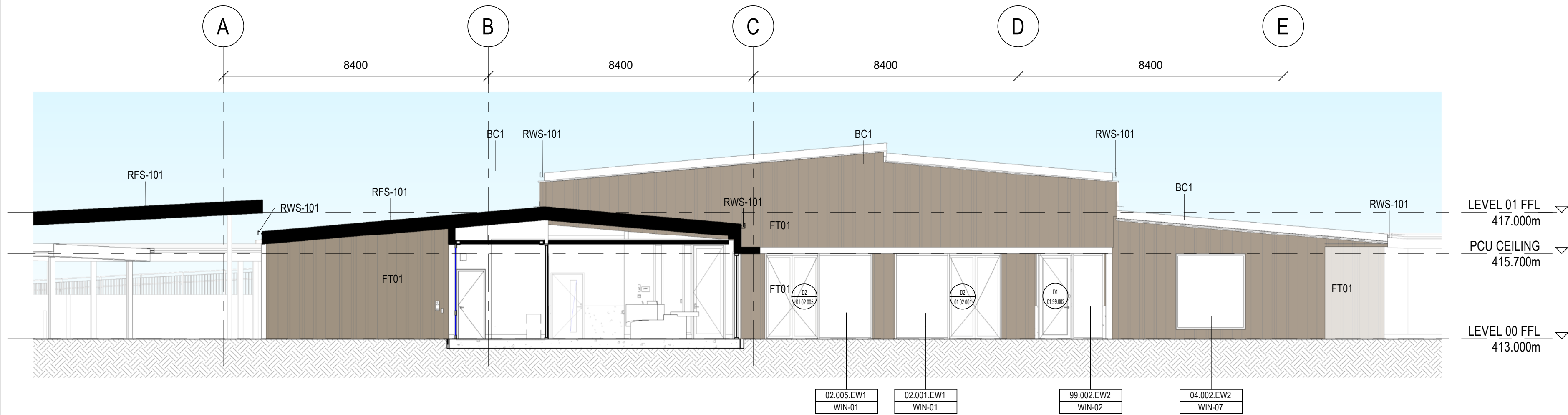




1 BUILDING EAST ELEVATION



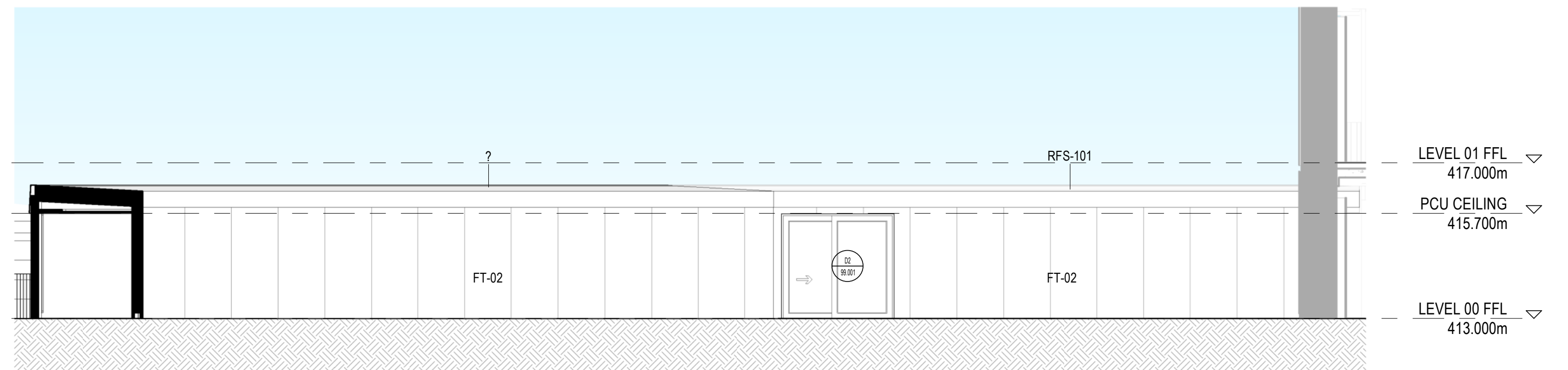
5 LINK EAST ELEVATION



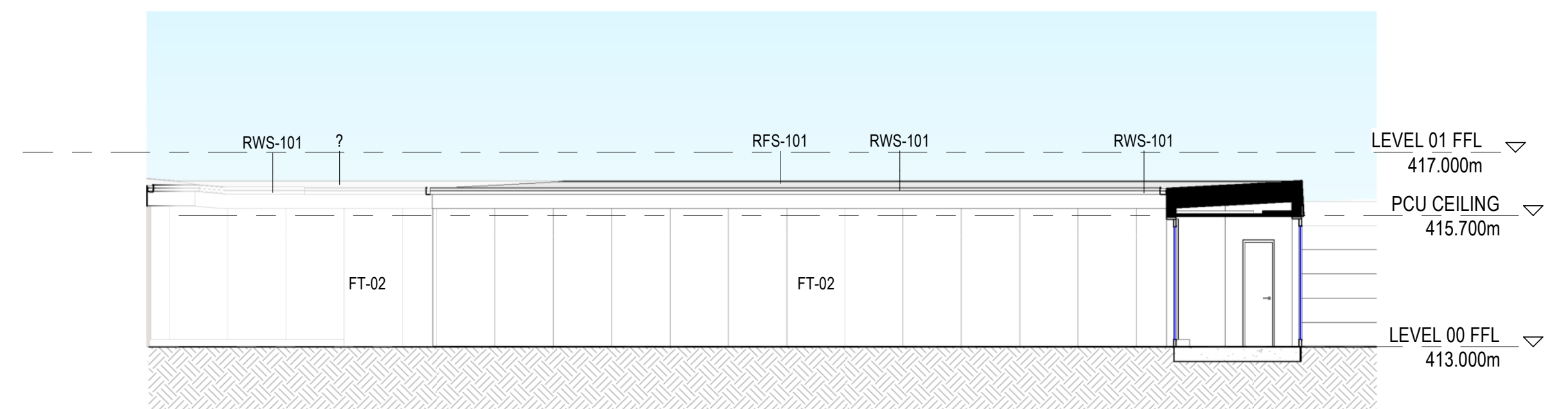
2 BUILDING SOUTH ELEVATION

ELEVATION LEGEND

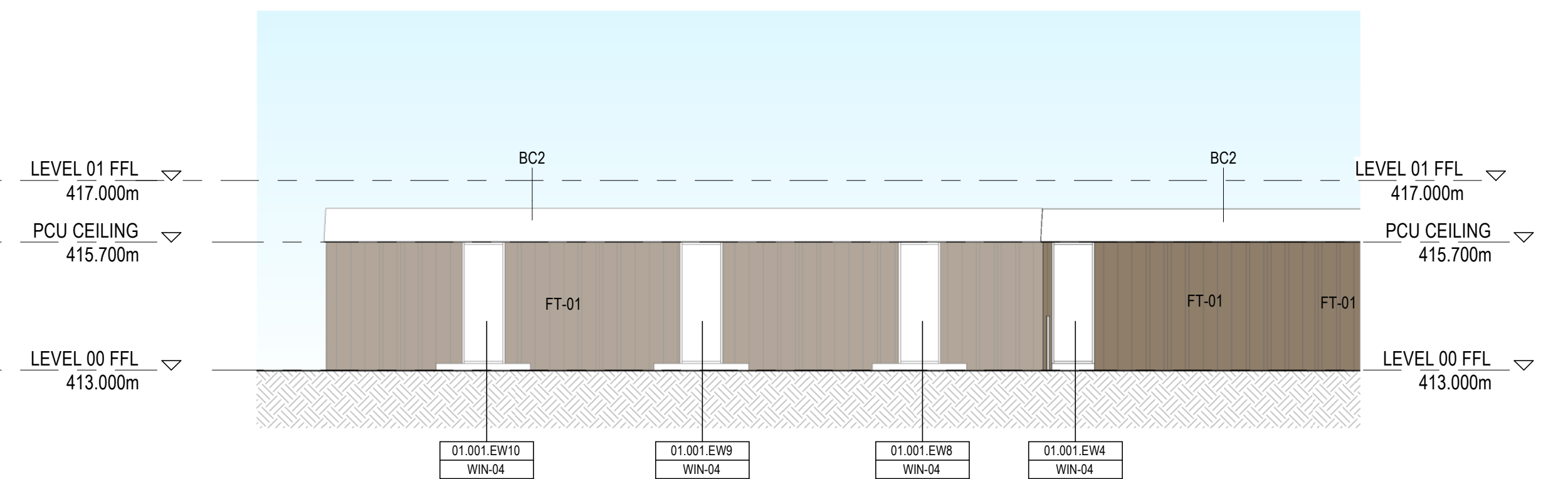
FT-01	FACADE CLADDING TYPE 1 - SCULPTFORM VELO FACADE CLADDING, VERTICAL RANDOM PATTERN MADE OUT OF FINE LINE 300 & FLAT 75 (GREY TIMBER COLOUR)	RFS-101	ROOF SHEET METAL TYPE 1 - LYSAGHT LONGLINE ROOF METAL SHEETING (WINDSPARY COLOUR)
FT-02	FACADE CLADDING TYPE 2 - CEMINTEL FIBRE CEMENT CLADDING SYSTEM, VERTICAL (SURROUND WHITEISH COLOUR)	RWS-101	ROOF GUTTER TYPE 1 (WINDSPARY COLOUR)
		BC1	BARGE CAPPING TYPE 1 (WINDSPARY COLOUR)
		BC2	BARGE CAPPING TYPE 1 (WINDSPARY COLOUR)



6 LINK WEST ELEVATION



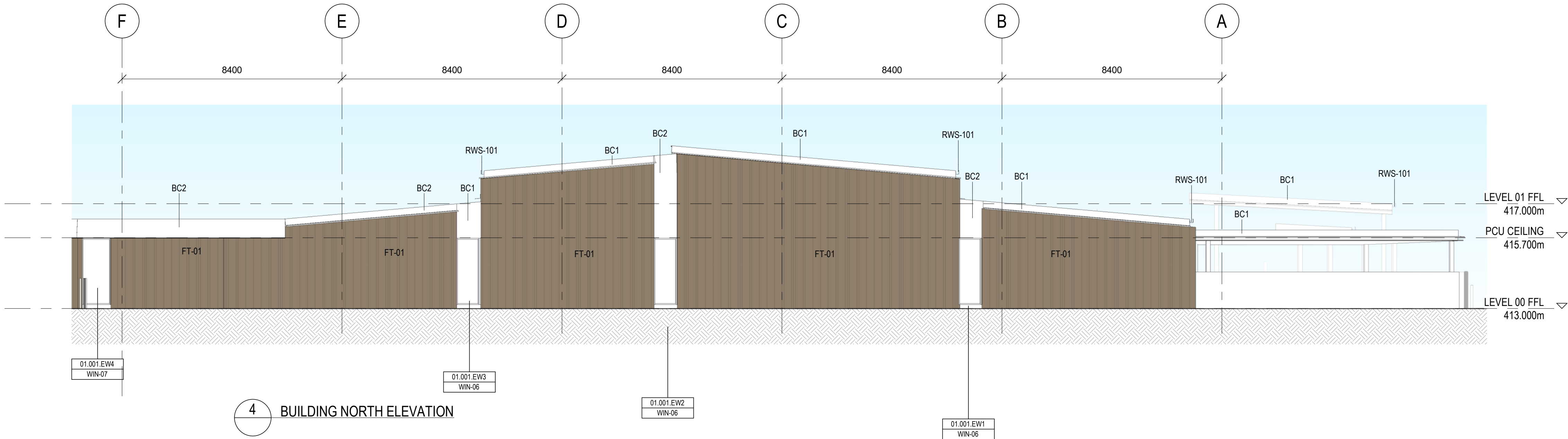
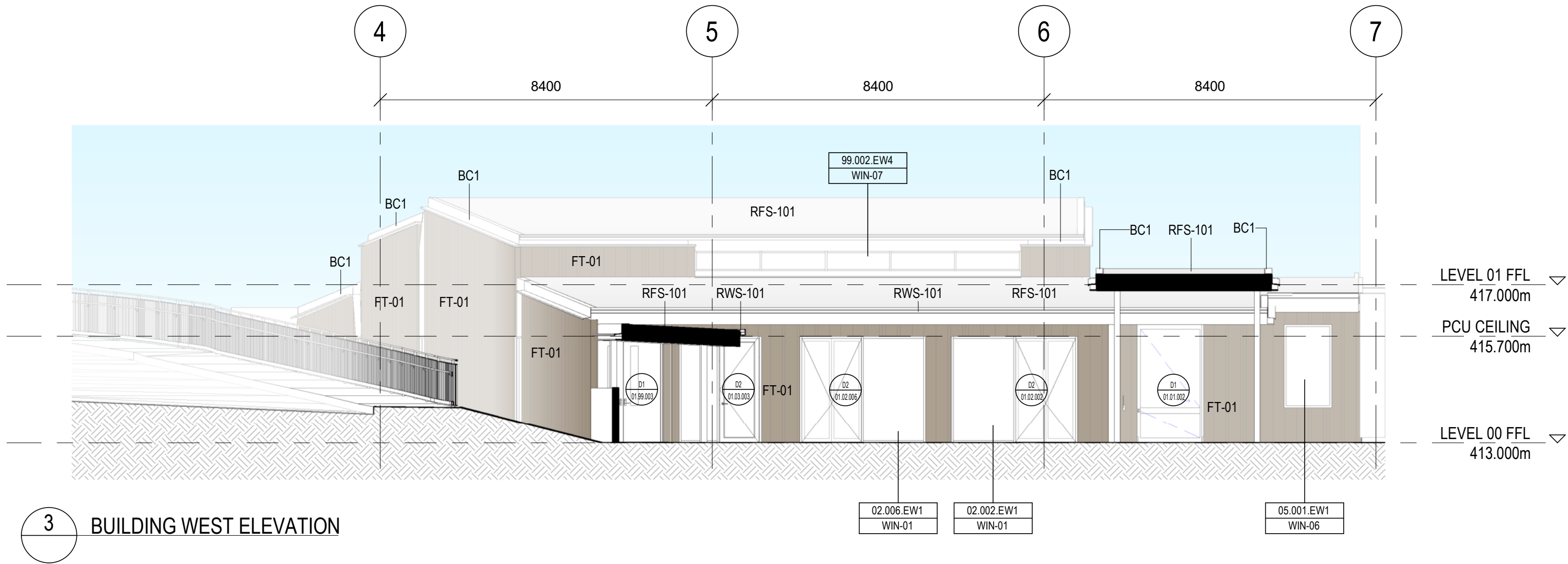
7 LINK SOUTH ELEVATION

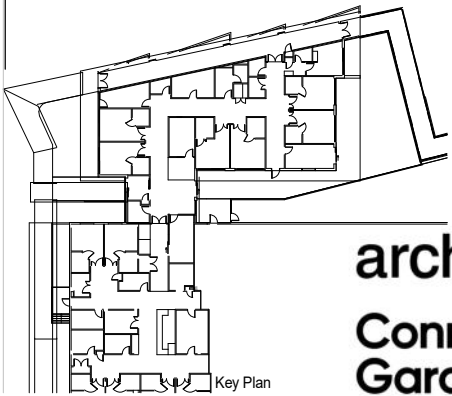


8 LINK NORTH ELEVATION

ELEVATION LEGEND

FT-01	FACADE CLADDING TYPE 1 - SCULPTFORM VELO FACADE CLADDING, VERTICAL RANDOM PATTERN MADE OUT OF FINE LINE 300 & FLAT 75 (GREY TIMBER COLOUR)	RFS-101	ROOF SHEET METAL TYPE 1 - LYSAGHT LONGLINE ROOF METAL SHEETING (WINDSPARY COLOUR)
FT-02	FACADE CLADDING TYPE 2 - CEMINTEL FIBRE CEMENT CLADDING SYSTEM, VERTICAL (SURROUND WHITEISH COLOUR)	RWS-101	ROOF GUTTER TYPE 1 (WINDSPARY COLOUR)
		BC1	BARGE CAPPING TYPE 1 (WINDSPARY COLOUR)
		BC2	BARGE CAPPING TYPE 1 (WINDSPARY COLOUR)





architectus™
Conrad
Gargett

Client
**HEALTH
INFRASTRUCTURE**

Project
**WORLD CLASS END OF
LIFE PROGRAM -
TAMWORTH PALLIATIVE
CARE**

Revision
REV DESCRIPTION

DATE

INT.

Details

Copyright Architecture Conrad Gargett. ACN 90 131 245 684
ABN 90 131 245 684
Do not scale this drawing and verify all dimensions and levels on site.
Nominated Architect : Lawrence Toaldo NSW Reg. 10255.

0mm

40.

Drawing

ARTIST IMPRESSION

A3 Scale

Project **2210003**

Issue

Drawn **Author**

Drawing **WCEOL-WM-RLS-000001**

